

Murphy focused on vaccine distribution

By DAVID NAHAN
Cape May Star and Wave

With the potential to have vaccines for COVID-19 getting to New Jersey within the next month, Gov. Phil Murphy said the state is pushing to ensure the presidential transition can begin so there are no holdups on federal support for vaccine distribution.

"We're back at a place we haven't seen in many months," Murphy said on Monday at his COVID-19 press conference. Unlike other places in the country that are content to "let the virus have its way, that's not what we're about in New Jersey."

"We need the federal government to be right beside us," he added, which is why he and state Health Commissioner Judy Persichilli sent a letter to General Services Administration Administrator Emily Murphy "imploping her" to allow the transition coordination between the Trump Administration and President-elect Joe Biden and his team.

Part of the transition is allowing Biden's team access to plans for the distribution of COVID-19 vaccines as soon as they're available.

Murphy echoed Biden's concerns that not having the next president brought up to speed on the distribution will cost lives.

He said the state began preparing for a vaccine plan going back to March and his filed its plan with the federal government.

If Pfizer is granted approval on its vaccine, the governor said the state could receive its first 130,000 doses by the third week of December and another 130,000 doses the following week. And if Moderna has its vaccine approved, there could be another 100,000 doses in New Jersey before the end of the year.

"We are ready to move forward the moment these vaccines get to us," Murphy said.

He and Persichilli said health care workers would be the first to get the vaccines. Persichilli said they will be releasing a plan on who, exactly, would be prioritized for the vaccine because there are 650,000 health care workers in New Jersey and not enough doses to cover them initially. She noted that the state was expecting to get 1.1 million doses a month on a rolling basis by the end of January.

Numbers rising

"We can't let our guard down," Murphy said. "The numbers show why we need to remain at a heightened state."

The state Department of Health reported 11 more COVID-19 deaths Monday, bringing the total to 14,960 with another 1,812 probable COVID-19-related fatalities. There were another 3,592 new positive test results announced Monday, pushing the COVID-19 total to 309,588, the positivity rate up to 8.65 percent and the rate of transmission to 1.32.

As of Sunday, there were 2,693 patients treated; 247 were discharged as 333 patients admitted. There were 537 in critical care and 240 ventilators in use.

21 died in hospital Sunday. 537 in critical care and 240 ventilators in use.

Lower Township man recognized

At most of his press conference on COVID-19, the governor recognizes citizens whose lives were claimed by the coronavirus. On Monday, he cited Ronald Frech of the Villas in Lower Township. Although born and bred in northern New Jersey, he came to Cape May County 40 years ago and worked as a custodian in Middle Township School No. 2 and Stone Harbor Elementary School. He also drove a trolley for Cape May MAC for 15 years. He and his late wife had five children, 11 grandchildren and eight great-grandchildren. He was 83 years old.

Study on mask mandates

Persichilli said the Centers for Disease Control did a study of counties in Kansas with and without mask mandates. Those with a mask mandate saw a 6 percent decrease in new cases. Those without a mandate, a 100 percent increase in new cases.

"This study demon-

strates how effective masks can be in reducing the spread of the virus," she said. She noted the masks also will help prevent the spread of the flu.

Testing available

In southern New Jersey, testing is available at St. Michael's Church, 10 N. Mississippi Ave., Atlantic City, 9 a.m. to 4 p.m. Saturday and Sunday of this week, at the Atlantic City Convention Center, 10 a.m. to 6 p.m. Friday and Saturday, Nov. 30 to Dec. 5 and Dec. 7 to 12.

There also will be testing available on the campus of Stockton University, noon to 7 p.m. Dec. 5 and 6 at Townsend Residential life Center and 9 a.m. to 5 p.m. Dec. 7 and 8 at Lakeside Towne Hall.

Mental health support

After reiterating the recommendation that Thanksgiving gatherings are limited to immediate family, the governor noted that if the stress levels rise, there is a resource for mental health support in New Jersey.

"We know that the holidays in a normal year can be stressful, but this year even more so as so many of you are making arrangements that don't include family and friends who you yearn to see. If you need a break and need someone to talk to, reach out and make the call," Murphy said.

Call (866) 202-HELP or

text "NJHOPE" to 51684 for free, confidential support from NJ Mental Health Cares. Deaf or hard-of-hearing residents can call (973) 870-0677 from their videophones. The lines are open 8 a.m. to 8 p.m. daily.

Small business help

Murphy said the Small Business Emergency Assistance Grant Program has provided more than \$120 million to more than 27,000 businesses and 22,000 more will receive Phase 3 grants. Visit covid19.business.nj.gov for more information. Small businesses also can get discounts up to 70 percent on personal protective equipment (PPE) up to 70 percent. Visit covid19.nj.gov/ppeaccess.



Volunteers in Medicine
FREE CLINICS OF SOUTH JERSEY

Care generously provided by:

- RON & KATHY CUSTER
- MARGATE COMMUNITY CHURCH DEACONS
- JACK & ADA STEINBERG
- FREEHOLDER DIR. GERALD THORNTON
- KARIN WREN

For information about becoming a patient, to volunteer, or to safely donate online:
www.vimsj.org / 609-463-2846

THE WEST CAPE MAY ELEMENTARY SCHOOL IS NOW ACCEPTING CHOICE SCHOOL APPLICATIONS FOR THE 2021-2022 ACADEMIC YEAR

ARE YOU LOOKING FOR:

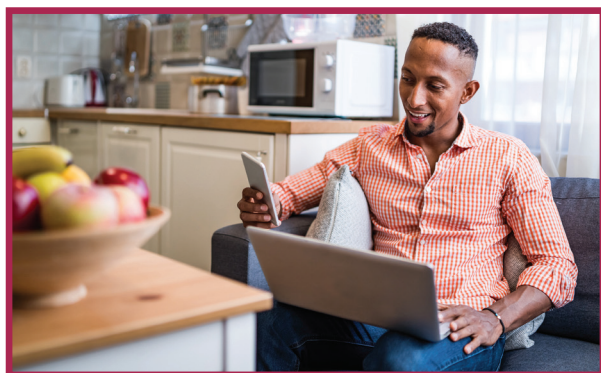
- small class size?
- individualized instruction?
- a community school?



To obtain Choice application forms please visit our website wcm.capemayschools.com, phone 609-884-4614 or email dbryan@wcm.capemayschools.com

APPLICATION DEADLINE DECEMBER 3, 2020
Don't miss the deadline to make your choice!

Bank whenever you want.
Our online tools & mobile app make it easy.



sturdyonline.com
609-463-5220



IccaraCapeMay.com



We are Open Thursday thru Sunday, from 4pm-9pm
INSIDE or OUTSIDE DINING & TAKE-OUT
Early Bird Special • 3 Course Dinner \$28, 4-5:30pm

CALL 609-884-0200 TO PLACE ORDERS OR RSVP
311 MANSION STREET, CAPE MAY



CITY OF CAPE MAY 2021 SEASONAL BEACH TAGS
TAGS MAY ALSO BE PURCHASED ONLINE AT CAPEMAYCITY.COM (Additional Fee Applies)

OR IN PERSON WITH CASH OR CHECK AT:
THE BEACH TAG OFFICE, 704 BEACH AVENUE, MON-FRI 10AM-4PM; SAT. & SUN 9AM-4PM
OR THE CAPE MAY CITY TAX OFFICE, 643 WASHINGTON STREET, MON-FRI 9AM - 1PM
FOR MORE INFORMATION CALL: 609-884-9540

2021 SEASONAL BEACH TAG MAIL ORDER FORM:

MAIL TO: Cape May City Hall, Attn: Tax Office, 643 Washington St., Cape May, NJ 08204

\$25 Price Valid December 1, 2020 through December 31, 2020 ONLY!!

Orders MUST be received by December 31, 2020 to qualify.

Price increases to \$30 beginning January 1, 2021. **Postmark not accepted**

Number of Tags _____ @ \$ 25.00 = \$ _____ + \$4.00 S/H TO U.S. per order = \$ _____

+ \$11.00 S/H TO CANADA

Name _____

Mailing Address _____

City _____ State _____ Zip _____

Phone _____ Email: _____

Please make checks payable to "City of Cape May" and include home phone number on check.

The City offers free Veteran and Active Military seasonal beach tags with proper identification. Must be picked up in person at the Tax Office.

City of Cape May • 2020

LEAF COLLECTION SCHEDULE

Loose leaves raked to the curb will be collected on the day/week of your scheduled street maintenance route.

Leaves placed in plastic bags will not be collected

LEAVES CONTAINING DEBRIS, TRASH OR BRANCHES WILL NOT BE COLLECTED

ZONE 1

All streets running North, South, East & West

Between Broadway & Beach Ave.
Between 3rd Ave. & Jefferson St.

Nov. 16th to 20th

ZONE 2

All streets running North, South, East & West

Between Beach Ave. & Lafayette St.
Between Jefferson St. & Madison Ave.
Between Madison Ave. & Pittsburgh Ave.
Between Michigan/Pennsylvania Ave. & Lafayettes St.
Also Includes Clay St. & St. James Pl.

Nov. 2nd to 6th and

Nov. 23rd to 25th

HOLIDAYS: Nov. 3, 26, 27 NOT COLLECTED

ZONE 3

All streets running North, South, East & West

Between Beach Ave. & Michigan/Pennsylvania Ave.
Between Madison Ave. & Wilmington Ave.
Between Madison Ave. & Pittsburgh Ave.
Between Pennsylvania Ave. & Texas Ave.
Between Pittsburgh Ave & Buffalo St.

Nov. 9th to 13th and

Nov. 30th to Dec. 4th

HOLIDAY: Nov. 11 NOT COLLECTED

Leaves, Branches, and Grass may be dropped off at the Recycle Yard

830 Canning House Lane, Cape May

For more information call The Public Works Dept. 609-884-9570