

Cape May committee considering extending Promenade

By JACK FICHTER
Cape May Star and Wave

CAPE MAY — The city is likely to receive a grant from the Federal Emergency Management Agency (FEMA) in the range of \$70,000 to \$80,000 for an initial design to extend the Promenade from Madison Avenue to Wilmington Avenue, according to Scott Maslow, chairman of Cape May's Promenade and Seawall Advisory Committee.

The beachfront in that area currently is a mix of low dunes and rocks.

During a meeting July 26, he said he expected an answer on the grant by the end of month. Committee member Jim Testa said he expected objections from

residents on the east side of town if the Promenade were extended beyond Pittsburgh Avenue. He said Pittsburgh Avenue marks the end of the commercial zone.

Testa said he does not believe east-side residents would object to a new seawall in that area without a promenade. Maslow said there was no suggestion of placing any commercial properties on an extension of Promenade.

He said restrooms may be required somewhere in the new stretch of Promenade.

Committee members Mike Jones asked Testa if he believed there would be objection to a walkway atop a new seawall such as seen from Jefferson Street

to Madison Avenue.

Testa said he feared commercial activities would be extended to the new portion of Promenade.

He said he considered a walkway atop the new section of seawall would be an "intrusive activity."

The committee also discussed a suggestion of widening the Promenade to better accommodate bicycles from the arcade to Convention Hall to Madison Avenue. Maslow said the estimated cost of the widening is \$367,000.

The Promenade would be expanded by 10 feet with two 5-foot-wide bike lanes from the arcade to Convention Hall, he said. Concrete already is on the site.

Maslow said benches

would be removed from that section of Promenade to gain width. The Promenade would gain 3 inches of height.

He said a bike lane would be continued from the end of Convention Hall to Madison Avenue. The Promenade would be widened by about 1 foot in that section and include two 4-foot bike lanes, Maslow said.

"The dunes have grown into the Promenade, so you're having at least about a foot of the Promenade that's being covered by the dune," he said.

Maslow suggested the committee prepare a presentation for City Council at a work session. He said he hopes the project could be included in the city

budget and be completed by next summer.

"That's really the virtue of all this in a crowded area, where we're trying to accommodate people, being in many instances more bike-friendly and have a huge, dense amount of people moving," Testa said.

Jones suggested a member of the Bicycle and Pedestrian Advisory Committee accompany the Promenade and Seawall Committee to the presentation to council.

Maslow said he met with environmental consultant Joseph Lomax on the topic of Cape May being allowed by the state Department of Environmental Protection (DEP) to undertake its own dune maintenance. Lomax

was able to set up dune maintenance programs for Avalon and Stone Harbor.

Lomax suggested the committee set up a public meeting on dune maintenance, according to Maslow.

The dunes have unrestricted growth that blocks a view of the ocean from the Promenade and homes across Beach Avenue, Maslow said. He said some trees are taking over the dunes.

"Everybody is on board that we need some sort of maintenance," Maslow said.

Prior to any maintenance permit being issued by the DEP, mapping of the current vegetation on dunes must be completed, he said.

Drone delivers supplies offshore in test flight from ferry terminal

NORTH CAPE MAY — The Defense Logistics Agency Troop Support and the New Jersey Institute of Technology Unmanned Aircraft Systems Test Site successfully conducted two unmanned aircraft systems research flights, hosted by the Delaware River and Bay Authority at the Cape May-Lewes Ferry terminal.

On July 24-25, the research flights consisted of two 1-mile flights to learn about the potential use of unmanned aircraft systems (UAS) to deliver materials to areas that may be inaccessible by normal delivery methods, such as a combat environ-

ment or during disaster-relief efforts, and to generate UAS flight data for research and analysis by the New Jersey Institute of Technology Unmanned Aircraft Systems Test Site.

The UAS initially transported a case of First Strike Rations and a case of bottled water from the terminal to a delivery point at the New Jersey Aquaculture Innovation Center to evaluate its land-to-land capabilities. The next day, it transported the same load from the ferry terminal to the U.S. Coast Guard's fast response cutter Lawrence Lawson off the coast of Cape May to evaluate its land-to-

sea-to-land capabilities.

"Today's research flight demonstrates our efforts to learn about the potential use of UAS to deliver materials to areas applicable in supporting warfighters in austere environments and on ships, in addition to continental United States disaster relief," said Nick McGinty, defense logistics agency troop support subsistence industrial base planning chief. "We are incredibly proud of the DLA [Troop Support] team, today's flight crew, our partners at NJIT, American Aerospace Technologies Inc., which is the contractor of the drone, and DRBA for hosting the event."

This demonstration is the first step in evaluating using potential UAS capabilities to support potential DLA Troop Support Subsistence humanitarian assistance and disaster relief missions in the future.

DLA Troop Support is responsible for five supply chains that provide the nation's military and government partners with food and feeding equipment; clothing and textile items; construction and equipment material; medical material and pharmaceuticals; and industrial hardware consumable repair parts.



Chuck Lear/City of Cape May

Life Rolls On, with a little help from friends

Volunteers with Life Rolls On helped those with spinal cord injuries or mobility issues to surf Aug. 4 in Wildwood as part of They Will Surf Again, with local sponsorship from the DeSatnick Foundation. Above, first-time volunteers at the event raise their hands. Below, volunteers assist surfers.



Robert Newkirk/Special to the CAPE MAY STAR AND WAVE

TIDES : Aug. 7-14, 2019

DATE	HIGH		LOW	
	A.M.	P.M.	A.M.	P.M.
7	1:36	2:22	7:44	8:24
8	2:39	3:24	8:41	9:31
9	3:45	4:26	9:40	10:35
10	4:49	5:23	10:38	11:34
11	5:49	6:15	11:33	
12	6:41	7:02	12:28	12:23
13	7:27	7:45	1:15	1:09
14	8:09	8:24	1:57	1:52

MOON PHASES

First quarter, Aug. 7 • full moon, Aug. 15

Treat yourself to some Sweet rates

19 MONTH CD¹

1.75% APY²

36 MONTH CD

1.95% APY²



OPEN ONLINE TODAY!

¹19 month term available for a limited time. CD will be converted to 18 months upon renewal.

²APY: Annual Percentage Yield effective as of August 1, 2019. Rates subject to change. \$500 minimum balance per account to open and to obtain APY. Early withdrawal penalties will be imposed, which could reduce earnings on the account. Interest compounded quarterly. For additional information, please visit our website, a local branch or call 609.522.5115.



Big Bank Products • Community Bank Service | 609.522.5115 • crestsavings.bank

Cape May Star & Wave

CAPE MAY STAR AND WAVE (ISSN 519-020)
Volume 165 Number 31

Published weekly by Sample Media, Inc.,
801 Asbury Ave., #310, Ocean City, N.J. 08226

Published Weekly (52 times a year)

SUBSCRIPTION PRICE: By mail for \$42 a year; \$75 for two years; \$22 for six months. Periodical Postage at Cape May Court House, N.J. and additional mailing offices.

POSTMASTER: Please send address changes to the Cape May Star and Wave, P.O. Box 2427, Cape May, N.J. 08204.

165 Years Old • 1854-2019

SHOP SMALL,
SPEND LOCAL,
EAT LOCAL,
ENJOY LOCAL.
Support the local
businesses that
support the
community.



Professional Equity Theatre
The Robert Shackleton
Playhouse
405 Lafayette St. Cape May

609-770-8311
capemaystage.org

Cape May Stage's mission is to produce compelling impactful theatre that engages audiences to enrich their lives.

Sidekicked

Tony Award Nominated
Sally Mayes is
Vivian Vance



AUG 7- SEP 20
TUES- SUN | 8 PM

By Kim Powers
Directed by Roy Steinberg

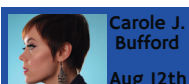
It's the last night of filming "I Love Lucy" and America's favorite sidekick - Ethel Mertz, played by Vivian Vance - has a lot to get off her chest. This new play gives a glimpse into the behind the scenes drama of "I Love Lucy" as well as incredible unheard stories from Vivian Vance's extraordinary career.

8 PM \$50.00

PNC artsy alive

PRESENTS THE 2019 CAPE MAY STAGE

Broadway Series



Carole J. Bufford
Aug 12th

After Party
Provided by The
Washington Inn

Luxury Housing
Provided by
Cape Resorts



AUGUST 19, 2019
AN EVENING WITH
SALLY MAYES

8 PM \$40.00



We are now a
Full Service Branch



Nicole Sweitzer
Cape May Branch Manager

- Deposit Solutions
- Remote Deposit
- Internet Banking
- Mobile Banking
- Lending Options
- Deposit ATM
- Cash Management
- Wealth Management

And more!

CAPE MAY HOURS:

Monday - Thursday
8:30am - 4pm

Friday | Saturday
8:30am - 5pm | 8:30am - 1pm



Big Bank Products • Community Bank Service
609.770.2256 • crestsavings.bank



315 Ocean St #5 • Cape May, NJ