

Harbor Gallery to exhibit ocean-inspired art through June

CAPE MAY — The Harbor Gallery has chosen two local artists inspired by the ocean — Johnny Glogowski and Janet Payne — to exhibit for the month of June.

All artwork is for sale, with a portion supporting New Jersey Audubon's Nature Center of Cape May, at 1600 Delaware Ave., where the gallery is located.

Glogowski is a local self-taught photographer who

started shooting videos and photographs of skateboarders more than 10 years ago as a way to still be around his friends after being injured.

He soon turned his camera to the ocean and surfers. A North Cape May native, his love of the ocean started at an early age, spending hours tossed by the waves with his friends.

"The ocean is everything to me," he said. "It's my friends. It's my peace and

quiet. It's my teacher. It's my therapy. It's an instant mood changer."

Glogowski's photographs capture the mood of the ocean, often shot during the "golden hour," the last hour of the day. Glogowski shoots in both black and white and color depending on the story or feeling he wants to portray with each photo.

Payne is a local artist and jeweler who spends hours each morning walking the beaches of Cape May to collect sea glass for her jewelry.

Along the way she picks up beach trash, which she uses to create fanciful fish out of the plastic collected from the tide line.

Payne was inspired to start picking up beach trash after seeing microplastic on the strand line of a beach in Hawaii more than six years ago.

"I want to make sure that all of our grandchildren have a beautiful beach to enjoy and explore. I hope that my fish can be a conversation starter about our



'Golden Hour on the Delaware Bay' will be among the works by photographer Johnny Glogowski on display throughout June in Harbor Gallery at the Nature Center of Cape May.

use of single-use plastic and hopefully bring about some changes in our every day use of plastics," she said.

Payne is inspired by the

natural, ocean-worn textures in the driftwood she finds on the beach. Using acrylic paint, she gently coaxes the natural sea-

scapes out of these pieces of wood, which are then framed with bits of dune fencing that she also finds on the beach.

WHAT IS YOUR MORTGAGE PLAN?

CALL OUR RESIDENTIAL LENDING TEAM TODAY

609-463-5210

mortgage@sturdyonline.com



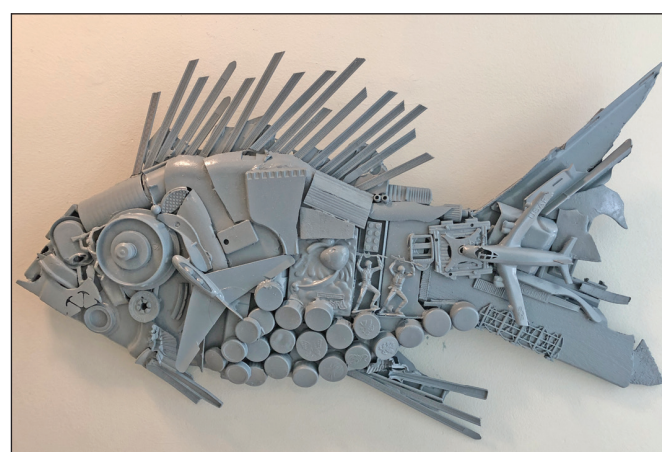
STURDY SAVINGS BANK
Building Your Future. Celebrating Our Past.
NMLS #410428



sturdyonline.com



'Seascape,' above, and 'Plane Fish,' right, by Janet Payne, are among the work that will be featured in June at Harbor Gallery.



County stops reporting COVID data on website

By **JACK FICHTER**
Cape May Star and Wave

CAPE MAY COURT HOUSE — The Cape May County Health Department has discontinued reporting the number of active COVID cases on its website.

An announcement on the county's COVID dashboard page states "Effective June

4, 2022, all COVID tracking information can be found at Covidactnow.org. No further updates will be made to this page."

The county had been providing the number of active cases by municipality. As of June 3, the last day of reporting, the county had 504 cases. The county figures did not include the result

of positive home tests.

Covidactnow.org listed 253 active cases and five hospital admissions in the county at the end of last week.

According to the Centers for Disease Control and Prevention (CDC), Cape May County remained at a high level of transmission. The CDC recommends

wearing a mask indoors and on public transportation in areas of high transmission and staying up to date on vaccinations.

As of Sunday, New Jersey had 20 new COVID-19 deaths and 2,559 confirmed positive tests, down 7 percent from a week ago but up 11 percent from a month ago.

No charges in crash that killed pedestrian

CAPE MAY COURT HOUSE — No charges will be filed in an accident that killed a pedestrian on the sidewalk on Lafayette Street in Cape May.

Acting County Prosecu-

tor Michelle DeWeese said investigation revealed the driver had experienced a medical emergency while operating the vehicle, leading to the accident.

The investigation was

conducted by the Cape May County Prosecutor's Office Fatal Crash Investigation Unit and members of the Cape May Police Department.

Police were responding to a report of an erratic driver at about 4:14 p.m. May 15 when an officer observed the crash in the 500 block of Lafayette.

The pedestrian, identified as Eva Wolfe, 63, of Marlton, was struck and pronounced dead at the scene.

The driver, Michael Fitzpatrick, 51, of Lafayette Hill, Pa., and a juvenile passenger were transported to Cape Regional Medical Center for treatment of injuries.

After striking Wolfe, the vehicle struck a utility pole and another vehicle before becoming disabled.

Historic COLD SPRING VILLAGE

EARLY AMERICAN OPEN-AIR
NON-PROFIT LIVING HISTORY MUSEUM
735 SEASHORE ROAD, CAPE MAY, NJ HCSV.ORG



THE 1800s COME TO LIFE when you visit restored, historic buildings on a 30 acre site. Historically clothed interpreters demonstrate blacksmithing, printing, woodworking, bookbinding, and more!

VISIT HCSV.ORG FOR ADDITIONAL INFORMATION

COLD SPRING BREWERY

NEW JERSEY'S FIRST NON-PROFIT BREWERY
733 SEASHORE ROAD, CAPE MAY, NJ COLDSRINGBREWERY.ORG



LIVE MUSIC on SATURDAYS
FREE PARKING
DOG FRIENDLY
OPEN YEAR ROUND



RIO NAILS & SPA

Professional Nail Salon
Full Service for Ladies & Gentlemen

WALK-INS WELCOME • GIFT CERTIFICATES

Next to UPS
3301 Route 9 South
Rio Grande, NJ 08242
609-463-8868

Next to TJMAXX
20 Court House - Dennisville Road
CMCH, NJ 08210
609-463-4777

OPEN:
Monday - Saturday
9 am - 7 pm
Sunday 10 am - 4 pm



Carefree SUMMER SPECIALS

THE CAPE MAY DAY SPA & HOLISTIC CENTER

609.898.1003
607 Jefferson Street
Cape May, NJ
CapeMayDaySpa.com

Midsummer Night's Dream

80 minutes ~ \$205 per person
Take a break and drift away in the rhythm of a soothing Swedish massage enhanced by an Aveda Stress Fix composition, a blend of lavender, lavandin and clary sage oils. This blissful massage is paired with a foot massage and foot scrub for the most relaxing finish.

For the full list of specials,
visit CapeMayDaySpa.com

Massages • Facials • Baths • Couple's Packages